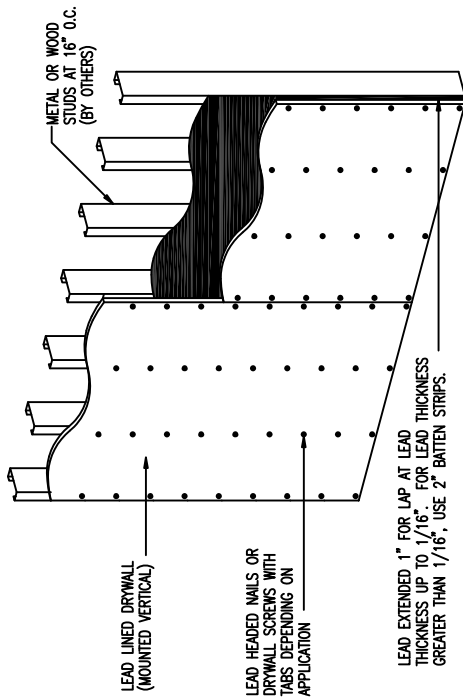


LEAD LINED DRYWALL DETAILS



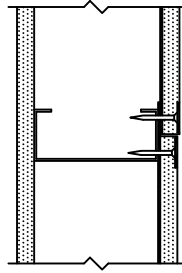
268 OLD LINDALE RD. • ROME, GA 30161
706-235-8822 • FAX 706-232-2518



LEAD LINED DRYWALL (MOUNTED VERTICAL)

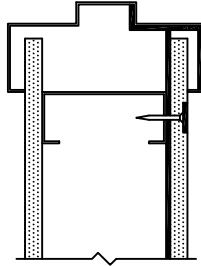
LEAD HEADED NAILS OR DRYWALL SCREWS WITH TABS DEPENDING ON APPLICATION

LEAD EXTENDED 1" FOR LAP AT LEAD THICKNESS UP TO 1/16". FOR LEAD THICKNESS GREATER THAN 1/16", USE 2" BATTEN STRIPS.

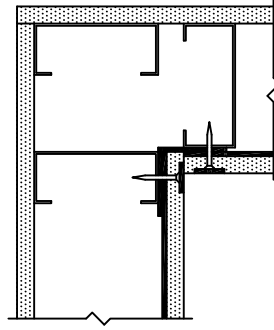


DRYWALL JOINT WITH 1" LAP FOR LEAD UP TO 1/16"

INSTALLING SCREW & TAB: INSERT SCREW INTO DRYWALL UNTIL IT IS SLIGHTLY DEEPER THAN TAB THICKNESS. THEN INDENT DRYWALL SURFACE TO SUIT TAB SIZE AND GLUE TAB IN PLACE. FINISH WITH STANDARD JOINT COMPOUND.



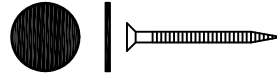
INTERSECTION AT FRAME (MAKE SURE LEAD OVERLAPS WITH LEAD IN FRAME)



INSIDE CORNER WITH 2" x 2" LEAD CORNER ANGLE FOR LEAD THICKNESS GREATER THAN 1/16". FOR LEAD THICKNESS UP TO 1/16" CUT DRYWALL AWAY AND BEND LEAD TO OVERLAP 1". (OUTSIDE CORNER IS SIMILAR)

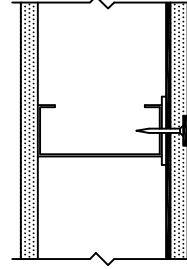
NOTES:

1. ALL DRYWALL SCREWS ARE BY OTHERS.
2. FOLLOW PHYSICIST AND/OR NCRP (NATIONAL COUNCIL ON RADIATION PROTECTION AND MEASUREMENTS) REPORTS # 49 & 116 FOR RECOMMENDATIONS ON SHIELDING CONFIGURATIONS OR LOCAL CODES WHERE APPLICABLE.
3. LEAD LINED DRYWALL IS SHOWN INSTALLED ON METAL STUDS. ALL OTHER APPLICATIONS SUCH AS WOOD STUDS, METAL FURRING OR WOOD STUDS ARE SIMILAR.
4. WHEN DRYWALL IS TRIMMED TO WIDTH, USE ALL PARTIAL PIECES AS REQUIRED.
5. PLYWOOD IS SIMILAR EXCEPT BATTEN STRIPS ARE USED FOR EVERY LEAD THICKNESS.

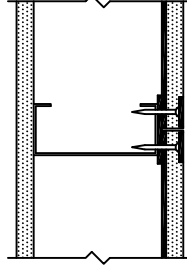


7/8" Ø LEAD TAB TO COVER SCREW HEAD

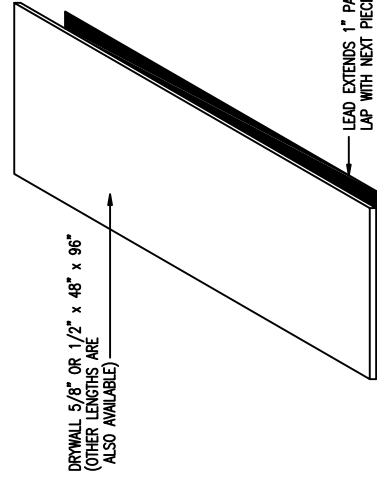
INSTALL SCREW & TAB @ 8" O.C.



SHIM AT INTERMEDIATE STUD (IF REQUIRED, BY OTHERS)



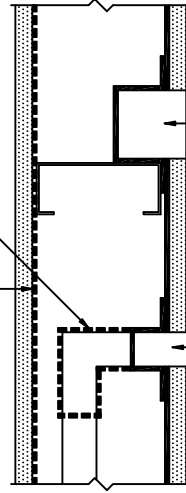
DRYWALL JOINT WITH 2" WIDE LEAD BATTEN STRIP FOR LEAD GREATER THAN 1/16"



DRYWALL 5/8" OR 1/2" x 48" x 96" (OTHER LENGTHS ARE ALSO AVAILABLE)

LEAD EXTENDS 1" PAST DRYWALL ON ONE SIDE TO ALLOW LAP WITH NEXT PIECE FOR LEAD THICKNESS UP TO 1/16". LEAD DOES NOT EXTEND PAST DRYWALL FOR LEAD THICKNESS GREATER THAN 1/16". AND 2" LEAD BATTEN STRIPS ARE REQUIRED.

ALTERNATE METHOD: INSTALL SHEET LEAD BEHIND BOX INSTEAD OF WRAPPING THE UNIT.



PIPE OR DUCT WRAPPED WITH SHEET LEAD AND FLARED OUT TO OVERLAP LEAD IN WALL

ELECTRICAL OUTLET BOX OR X-RAY VIEW PANEL WRAPPED WITH SHEET LEAD AND FLARED OUT TO OVERLAP LEAD IN WALL

LEAD SHIELDING MAY BE REQUIRED AT DUCT OR PIPE BEND.