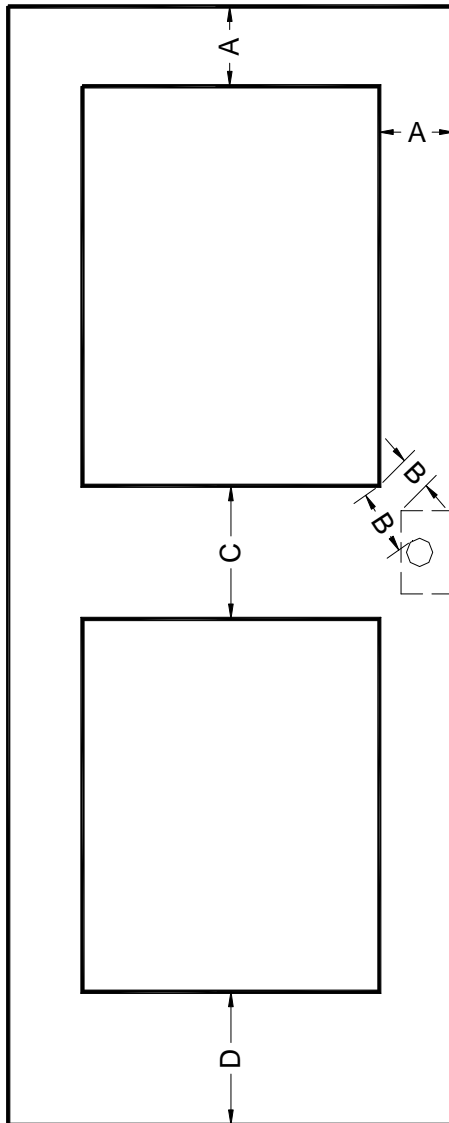


## LITE & LOCK CONFLICT



### FOR WARRANTY OR LABEL

**A** – Minimum Stile or Top Rail Dimension

**B** – Minimum Lite to Lock Dimension

**C** – Minimum Lite to Lite Dimension

**D** – Minimum Lite to Bottom Rail Dimension

| DOOR TYPE                  | FIRE RATING | A      | B      | C   | D   |
|----------------------------|-------------|--------|--------|-----|-----|
| LL Particle Board Core     | None        | 5"     | 3-1/4" | 5"  | 10" |
| LL SCL Core                | None        | 5"     | 1-1/4" | 3"  | 10" |
| LL Particle Board Core     | 20          | 5"     | 5"     | N/A | 10" |
| LL SCL Core                | 20          | 5"     | 5"     | N/A | 10" |
| LL Mineral Core            | 45-60       | 5-1/2" | 5-1/2" | N/A | 10" |
| Bullet Resistant Wood Core | None        | 5"     | 3-1/4" | 5"  | 10" |

**NOTES:** Dimensions are subject to change without notice. Additional size limitations may apply based on rating and construction. Contact factory for information.